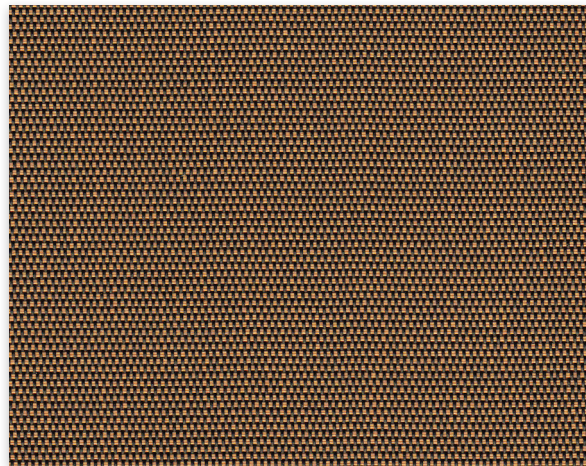


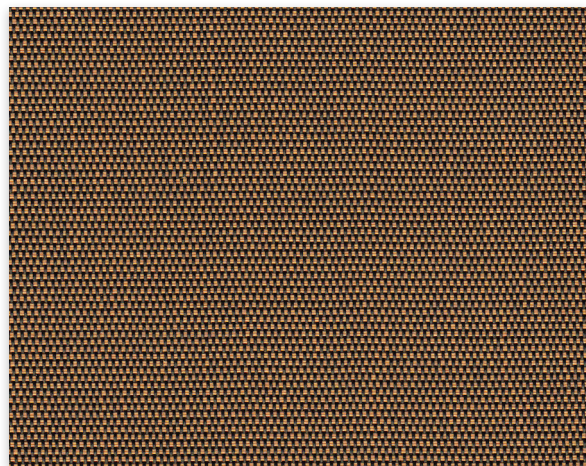
M Screen

Conventional | 1% 3% 5% openness



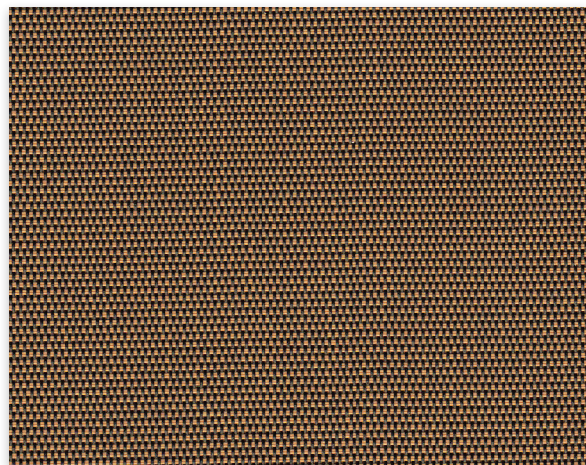
1%

030071 | Charcoal/Apricot



3%

030071 | Charcoal/Apricot

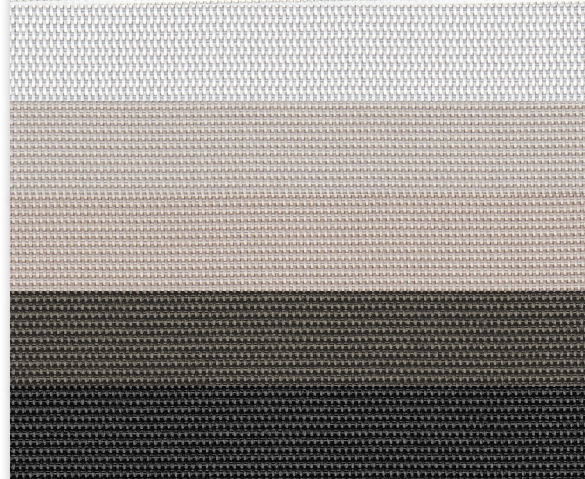


5%

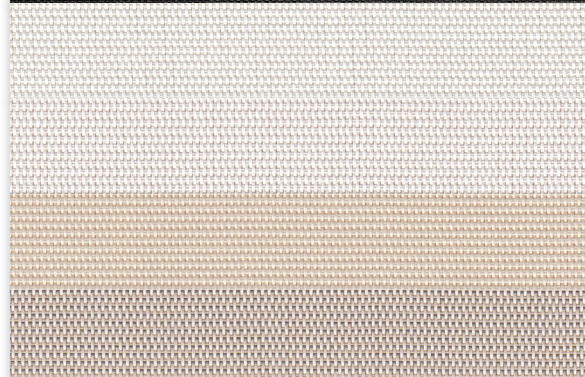
030071 | Charcoal/Apricot



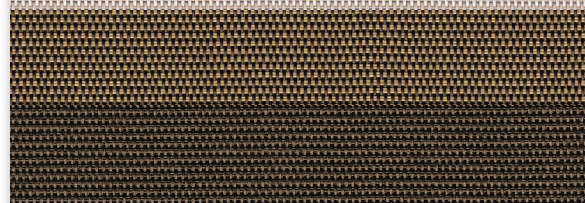
002002
White/White



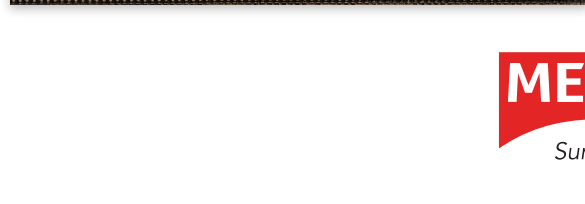
002007
White/Pearl



007020
Pearl/Linen



007007
Pearl/Pearl



030001
Charcoal/Grey

030030
Charcoal/Charcoal

002022
White/Stone

002020
White/Linen

020022
Linen/Stone

00M166
Linen/Sable-Cocoa

030010
Charcoal/Sable

030061
Charcoal/Cocoa

Fabrics sampled on waterfall are 5% openness.



Sun Control Textiles™

Specifications

Item Number	1% 008501 3% 008503 5% 008505
Product Category	Conventional
Fabric Style	Rib Weave
Openness Factor	1%, 3% & 5%
Composition	36% Fiberglass 64% Vinyl
UV Blockage	Approximately 95% - 99%
Standard Packaging	Rolls of 30 ly (27 lm)
Width	78 in (200 cm), 98 in (250 cm), 122 in (310 cm)
Weight	1% 13.12 oz/yd ² (445 g/m ²)±5% 3% 12.27 oz/yd ² (432 g/m ²)±5% 5% 11.3 oz/yd ² (384 g/m ²)±5%
Thickness	1% .022 in (0.56 mm)±5% 3% .022 in (0.55 mm)±5% 5% .022 in (0.55 mm)±5%

Classifications

Fire Classifications	NFPA 701-10 TM#1, California U.S. Title 19, CAN/ULC-S109-03 Small & Large Flame Test
Bacterial & Fungal Resistance Environment	ASTM E2180, ASTM G21
Acoustical Performance	RoHS - Lead Free, GREENGUARD Gold 1% NRC: 0.50, SAA: 0.49 3% NRC: 0.35, SAA: 0.33 5% NRC: 0.10, SAA: 0.12

Fabrication

Cutting: Cold, Ultrasonic or Crush | **Welding:** Radio Frequency, High Frequency, Impulse, Hot Air or Wedge
We recommend testing all cutting and welding methods prior to use to confirm they meet your individual fabric specifications.

M Screen

ITEM	COLOR
030071	Charcoal/Apricot
002002	White/White
002007	White/Pearl
007020	Pearl/Linen
007007	Pearl/Pearl
030001	Charcoal/Grey
030030	Charcoal/Charcoal
002022	White/Stone
002020	White/Linen
020022	Linen/Stone
00M166	Linen/Sable-Cocoa
030010	Charcoal/Sable
030061	Charcoal/Cocoa

FABRIC															FABRIC + GLASS														
thermal Total Solar									optical						commercial SHGC % Improvement						residential SHGC								
Rs (%)			As (%)			Ts (%)			Rv (%)		Tv (%)				Interior			Exterior			Interior			Exterior					
1	3	5	1	3	5	1	3	5	1	3	5	1	3	5	1	3	5	1	3	5	1	3	5	1	3	5	1	3	5
11	13	13	86	82	80	3	5	7	11	14	13	2	5	7	18	18	16	82	84	84	0.55	0.59	0.60	0.11	0.11	0.11			
76	71	71	9	11	10	15	18	19	81	76	75	12	16	16	63	55	55	82	76	76	0.24	0.29	0.30	0.13	0.16	0.16			
59	54	52	32	36	33	9	10	15	64	58	56	7	8	12	50	45	42	84	84	79	0.32	0.37	0.40	0.10	0.11	0.14			
36	40	39	56	49	49	8	11	12	38	42	41	5	8	9	34	34	32	82	84	82	0.44	0.46	0.47	0.12	0.12	0.13			
32	34	33	63	59	57	5	7	10	34	36	35	4	5	7	26	29	29	84	87	84	0.45	0.48	0.50	0.11	0.10	0.12			
7	8	8	91	90	86	2	2	6	7	8	8	2	2	5	18	16	13	82	87	84	0.56	0.61	0.63	0.12	0.09	0.11			
4	4	4	95	93	93	1	3	3	4	4	4	1	3	3	16	13	11	82	84	87	0.57	0.63	0.64	0.11	0.10	0.09			
67	62	61	15	17	18	18	21	21	71	66	65	16	18	18	55	47	47	76	74	74	0.30	0.35	0.36	0.16	0.18	0.18			
67	64	61	18	21	20	15	15	19	72	67	64	12	11	15	55	50	47	79	82	79	0.29	0.33	0.36	0.14	0.13	0.16			
50	51	50	29	28	28	21	21	22	53	53	52	18	16	18	42	39	37	71	76	74	0.39	0.41	0.42	0.19	0.18	0.19			
39	35	36	50	56	52	11	9	12	41	37	37	9	7	10	37	29	29	79	84	82	0.43	0.48	0.49	0.14	0.11	0.13			
10	12	13	87	84	81	3	4	6	10	13	13	2	4	5	18	18	16	82	84	84	0.55	0.59	0.60	0.12	0.10	0.11			
5	5	5	93	92	90	2	3	5	5	5	5	2	3	4	16	13	13	82	84	84	0.57	0.62	0.64	0.12	0.10	0.10			

Warranty

5 Year Exterior & 10 Year Interior

Care & Cleaning

Remove dust with a vacuum cleaner or compressed air. Do not scrub. Do not use solvents or any abrasive substance which might damage the coating of the fabric. Clean with a sponge or soft brush dipped in soapy water using a mild detergent. Rinse with clean water. Leave the blind down until completely dry. You can also very gently rub the fabric with a clean white pencil eraser to remove small stains.

The fabric performance tests were conducted in accordance with ASTM E891 & ASTM E903-96: Solar Transmittance (Ts), Solar Reflectance (Rs), Solar Absorptance (As), Visible Reflectance (Rv), and Visible Transmission (Tv). Glass performance tests for Solar Heat Gain Coefficient (SHGC) were conducted using the Lawrence Berkeley National Laboratory Window 7.3 NFR certified software. SHGC % improvement for commercial applications is based on a standard commercial glass makeup of Double Glazing 6 mm | 1/2" air | 6 mm with low E on surface #2. SHGC for residential applications is based on a default residential glass makeup of 3mm clear glass | 1/2" air | 3mm clear glass. Results for SHGC were obtained using the center of glass. Acoustical performance was tested in accordance with ASTM C423-09a: NRC is Noise Reduction Coefficient, SAA is Sound Absorption Average. For up-to-date test results, performance specifications and larger samples, contact the Mermet Technical Department at www.mermetusa.com.

Mermet Corporation
 5970 N. Main Street ■ Cowpens, SC 29330
 Ph 1.866.902.9647 ■ info@mermetusa.com

mermetusa.com